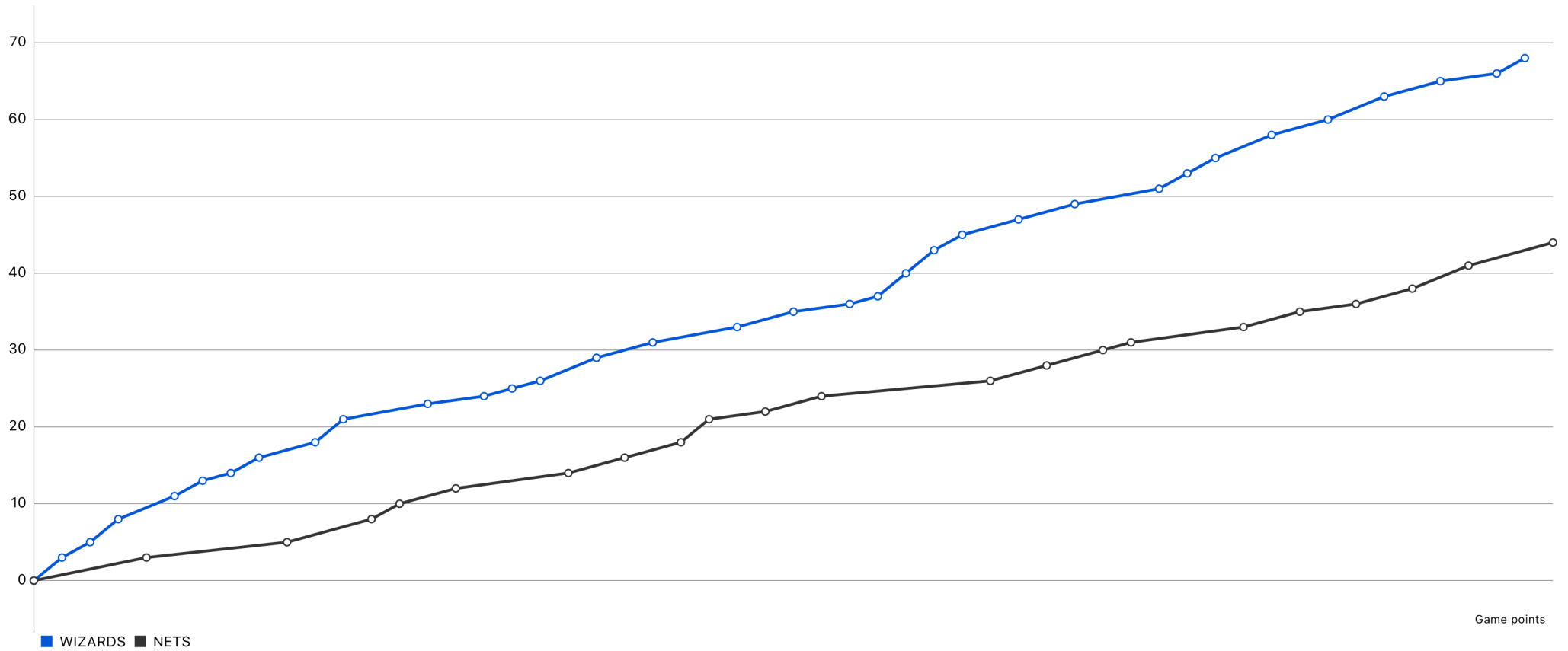


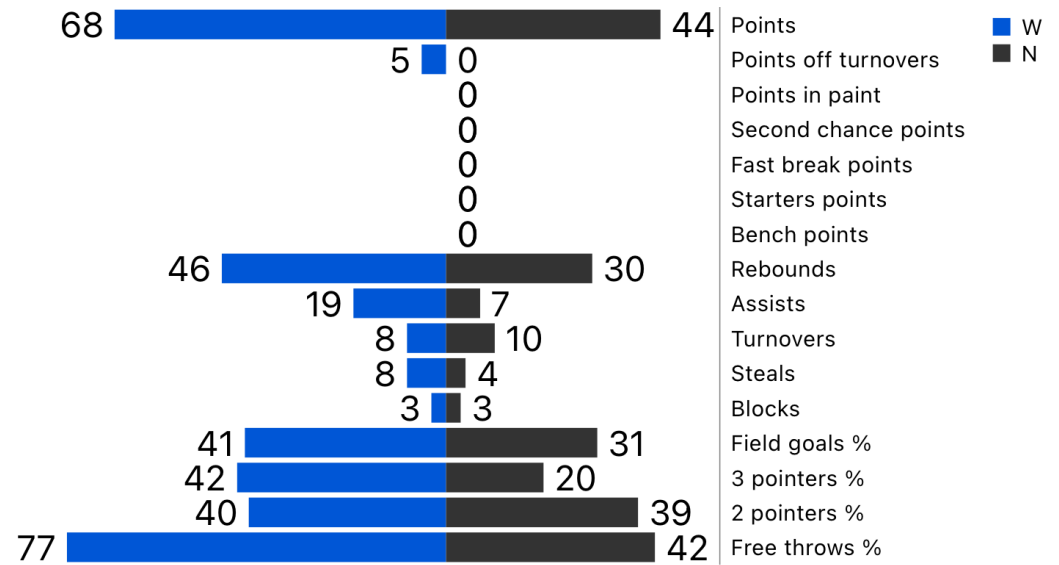
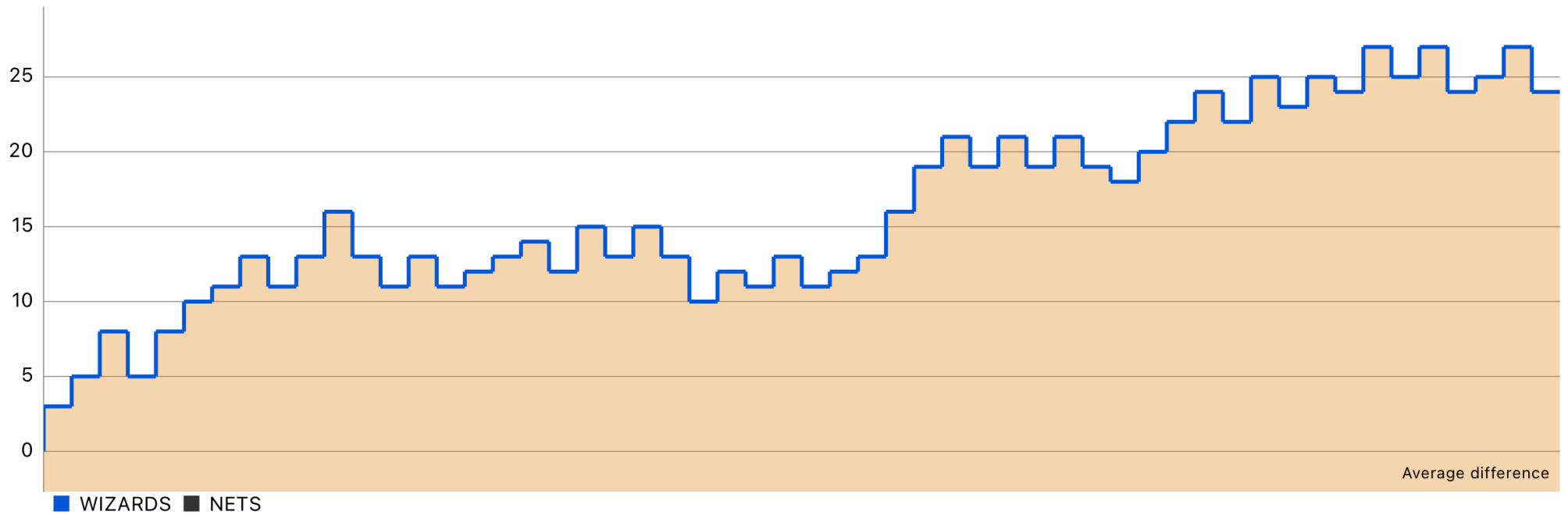
# WIZARDS (68) vs (44) NETS

Game report (Apr 21, 2024)



*Basketball  
Stats Assistant*





Points	Q1	Q2	Total
WIZARDS	35	33	68
NETS	24	20	44

Possessions	Q1	Q2	Total
WIZARDS	34	38	72
NETS	32	36	68

WIZARDS	Team leaders	NETS
Thomas Stapinski ( 26 )	Points	Brady Grass ( 13 )
Dan Thomas ( 8 )	Assists	Tristan Chaine ( 3 )
Luka Filipovic ( 13 )	Rebounds	Ayden Grass ( 9 )
Dan Thomas ( 34 )	Efficiency	Colby Chaine ( 12 )

Largest lead	Worst lead
27 (63-36)	-0 (0-0)

## WIZARDS

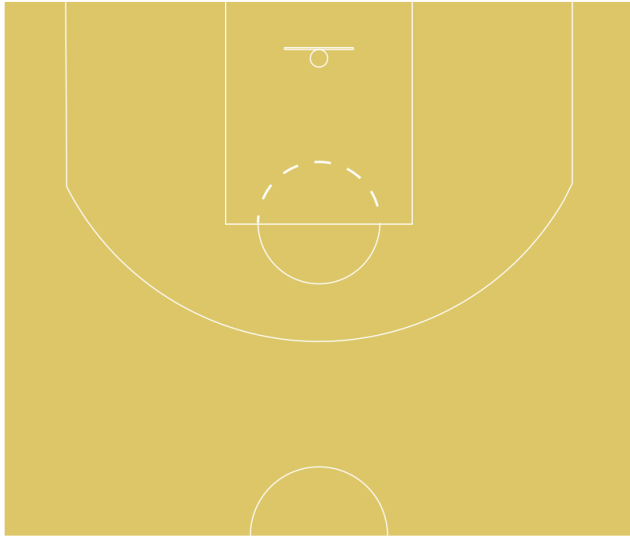
N°	Player	MIN	PTS	FGM	FGA	FG%	3PM	3PA	3P%	2PM	2PA	2P%	FTM	FTA	FT%	OREB	DREB	REB	AST	TOV	STL	BLK	SR	PF	PFD	PIR	EFF	+/-
1	Dan Thomas	00:00	16	5	8	62.5%	3	6	50.0%	2	2	100.0%	3	4	75.0%	0	11	11	8	1	3	1	0	0	0	34	34	24
2	Will Whyte	40:00	6	2	4	50.0%	2	4	50.0%	0	0	0.0%	0	0	0.0%	0	5	5	4	2	1	0	0	2	0	10	12	18
3	Ryan Martin	00:00	0	0	0	0.0%	0	0	0.0%	0	0	0.0%	0	0	0.0%	0	0	0	0	0	0	0	0	0	0	0	0	-
4	Camden Johnson	20:00	13	5	9	55.6%	1	3	33.3%	4	6	66.7%	2	2	100.0%	0	4	4	1	1	2	0	0	2	0	13	15	28
6	Noah Neal	00:00	0	0	0	0.0%	0	0	0.0%	0	0	0.0%	0	0	0.0%	0	0	0	0	0	0	0	0	0	0	0	0	-
7	Thomas Stapinski	20:00	26	11	24	45.8%	3	5	60.0%	8	19	42.1%	1	1	100.0%	0	7	7	2	2	0	1	0	1	0	20	21	20
8	Ian Robertshaw	40:00	4	2	8	25.0%	0	1	0.0%	2	7	28.6%	0	0	0.0%	0	6	6	1	1	0	0	0	4	0	0	4	8
10	Luka Filipovic	40:00	3	1	10	10.0%	0	2	0.0%	1	8	12.5%	1	2	50.0%	0	13	13	3	1	2	1	0	2	0	9	11	22
	<b>Total</b>		<b>68</b>	<b>26</b>	<b>63</b>	<b>41.3%</b>	<b>9</b>	<b>21</b>	<b>42.9%</b>	<b>17</b>	<b>42</b>	<b>40.5%</b>	<b>7</b>	<b>9</b>	<b>77.8%</b>	<b>0</b>	<b>46</b>	<b>46</b>	<b>19</b>	<b>8</b>	<b>8</b>	<b>3</b>	<b>0</b>	<b>11</b>	<b>0</b>	<b>86</b>	<b>97</b>	<b>-</b>

## NETS

N°	Player	MIN	PTS	FGM	FGA	FG%	3PM	3PA	3P%	2PM	2PA	2P%	FTM	FTA	FT%	OREB	DREB	REB	AST	TOV	STL	BLK	SR	PF	PFD	PIR	EFF	+/-
0	Ayden Grass	40:00	7	3	14	21.4%	1	5	20.0%	2	9	22.2%	0	0	0.0%	0	9	9	2	2	1	2	0	0	0	8	8	-22
2	Tristan Chaine	20:00	7	3	8	37.5%	0	1	0.0%	3	7	42.9%	1	3	33.3%	0	3	3	3	1	0	0	0	3	0	2	5	-22
5	Colby Chaine	40:00	11	4	9	44.4%	2	6	33.3%	2	3	66.7%	1	1	100.0%	0	4	4	1	0	0	1	0	0	0	12	12	-18
6	Bryce Womack	00:00	2	1	9	11.1%	0	4	0.0%	1	5	20.0%	0	0	0.0%	0	5	5	0	1	0	0	0	1	0	-3	-2	-28
8	Ben Miller	20:00	2	1	3	33.3%	0	2	0.0%	1	1	100.0%	0	0	0.0%	0	2	2	0	2	0	0	0	1	0	-1	0	-19
10	Brady Grass	40:00	13	5	12	41.7%	2	5	40.0%	3	7	42.9%	1	2	50.0%	0	4	4	0	3	0	0	0	1	0	5	6	-5
12	Ryan Walker	20:00	0	0	2	0.0%	0	2	0.0%	0	0	0.0%	0	0	0.0%	0	2	2	1	1	1	0	0	0	0	1	1	-8
43	Travis Hayward	20:00	2	1	1	100.0%	0	0	0.0%	1	1	100.0%	0	1	0.0%	0	1	1	0	0	2	0	0	0	0	4	4	2
	<b>Total</b>		<b>44</b>	<b>18</b>	<b>58</b>	<b>31.0%</b>	<b>5</b>	<b>25</b>	<b>20.0%</b>	<b>13</b>	<b>33</b>	<b>39.4%</b>	<b>3</b>	<b>7</b>	<b>42.9%</b>	<b>0</b>	<b>30</b>	<b>30</b>	<b>7</b>	<b>10</b>	<b>4</b>	<b>3</b>	<b>0</b>	<b>6</b>	<b>0</b>	<b>28</b>	<b>34</b>	<b>-</b>

## Dan Thomas

16 points | 0 fast break points | 0 points in paint | 0 second chance points



	FG	T3	T2	FT
Made	5	3	2	3
Attempted	8	6	2	4
%	62.5%	50.0%	100.0%	75.0%

Minutes 00:00

+/- 24

Efficiency 34

Def. rebounds 11

Off. rebounds 0

Rebounds 11

Assists 8

Turnovers 1

Steals 3

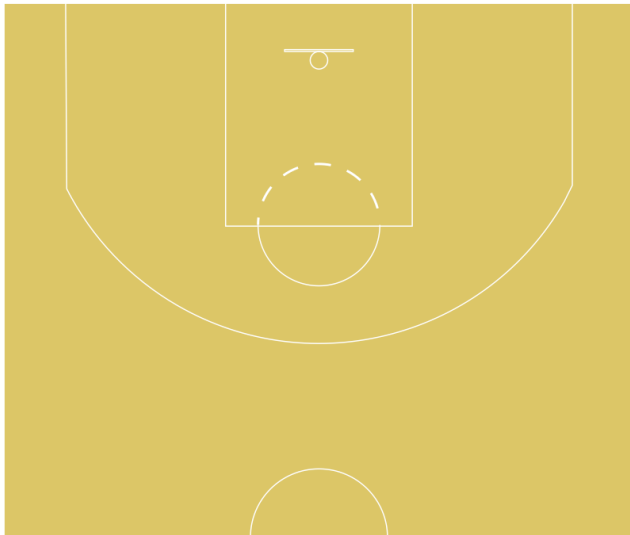
Blocks 1

Personal fouls 0

Fouls drawn 0

## Will Whyte

6 points | 0 fast break points | 0 points in paint | 0 second chance points



	FG	T3	T2	FT
Made	2	2	0	0
Attempted	4	4	0	0
%	50.0%	50.0%	0.0%	0.0%

Minutes 40:00

+/- 18

Efficiency 12

Def. rebounds 5

Off. rebounds 0

Rebounds 5

Assists 4

Turnovers 2

Steals 1

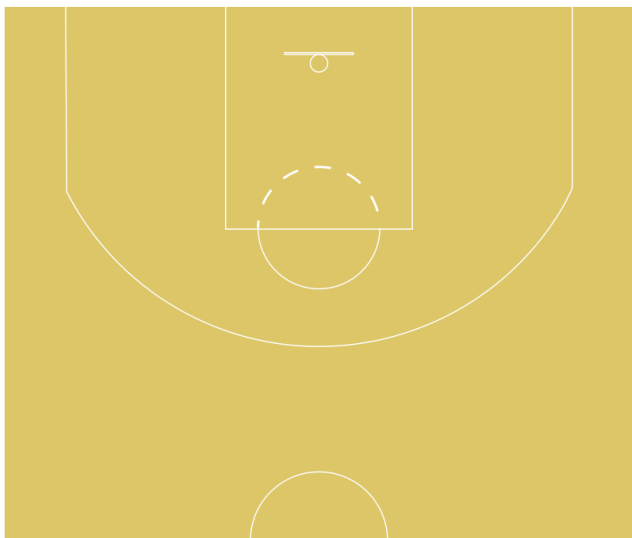
Blocks 0

Personal fouls 2

Fouls drawn 0

## Ryan Martin

0 points | 0 fast break points | 0 points in paint | 0 second chance points



	FG	T3	T2	FT
Made	0	0	0	0
Attempted	0	0	0	0
%	0.0%	0.0%	0.0%	0.0%

Minutes 00:00

+/- -

Efficiency 0

Def. rebounds 0

Off. rebounds 0

Rebounds 0

Assists 0

Turnovers 0

Steals 0

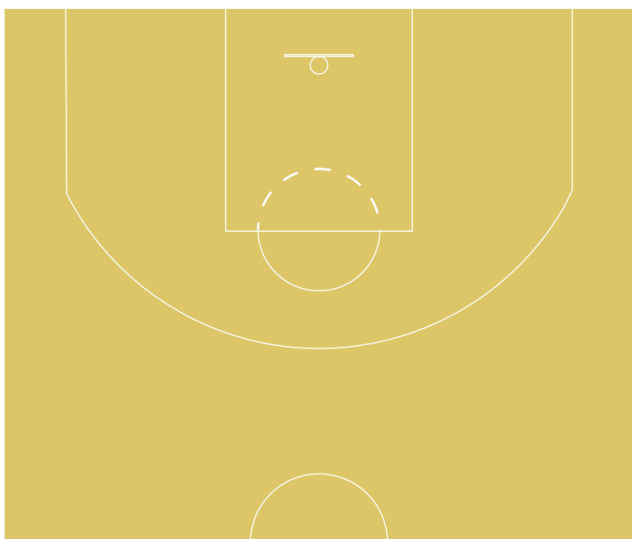
Blocks 0

Personal fouls 0

Fouls drawn 0

## Camden Johnson

13 points | 0 fast break points | 0 points in paint | 0 second chance points



	FG	T3	T2	FT
Made	5	1	4	2
Attempted	9	3	6	2
%	55.6%	33.3%	66.7%	100.0%

Minutes 20:00

+/- 28

Efficiency 15

Def. rebounds 4

Off. rebounds 0

Rebounds 4

Assists 1

Turnovers 1

Steals 2

Blocks 0

Personal fouls 2

Fouls drawn 0

## Noah Neal

0 points | 0 fast break points | 0 points in paint | 0 second chance points



	FG	T3	T2	FT
Made	0	0	0	0
Attempted	0	0	0	0
%	0.0%	0.0%	0.0%	0.0%

Minutes 00:00

+/- -

Efficiency 0

Def. rebounds 0

Off. rebounds 0

Rebounds 0

Assists 0

Turnovers 0

Steals 0

Blocks 0

Personal fouls 0

Fouls drawn 0

## Thomas Stapinski

26 points | 0 fast break points | 0 points in paint | 0 second chance points



	FG	T3	T2	FT
Made	11	3	8	1
Attempted	24	5	19	1
%	45.8%	60.0%	42.1%	100.0%

Minutes 20:00

+/- 20

Efficiency 21

Def. rebounds 7

Off. rebounds 0

Rebounds 7

Assists 2

Turnovers 2

Steals 0

Blocks 1

Personal fouls 1

Fouls drawn 0

## Ian Robertshaw

4 points | 0 fast break points | 0 points in paint | 0 second chance points



	FG	T3	T2	FT
Made	2	0	2	0
Attempted	8	1	7	0
%	25.0%	0.0%	28.6%	0.0%

Minutes 40:00

+/- 8

Efficiency 4

Def. rebounds 6

Off. rebounds 0

Rebounds 6

Assists 1

Turnovers 1

Steals 0

Blocks 0

Personal fouls 4

Fouls drawn 0

## Luka Filipovic

3 points | 0 fast break points | 0 points in paint | 0 second chance points



	FG	T3	T2	FT
Made	1	0	1	1
Attempted	10	2	8	2
%	10.0%	0.0%	12.5%	50.0%

Minutes 40:00

+/- 22

Efficiency 11

Def. rebounds 13

Off. rebounds 0

Rebounds 13

Assists 3

Turnovers 1

Steals 2

Blocks 1

Personal fouls 2

Fouls drawn 0



## Legend

PF-PA	Points in favour - Points against
FGM	Field Goals Made
FGA	Field Goals Attempted
FG%	Field Goal Percentage -> $(FGM / FGA) * 100$
3PM	3 Point Field Goals Made
3PA	3 Point Field Goals Attempted
3P%	3 Point Field Goals Percentage -> $(3PM / 3PA) * 100$
2PM	2 Point Field Goals Made
2PA	2 Point Field Goals Attempted
2P%	2 Point Field Goals Percentage -> $(2PM / 2PA) * 100$
FTM	Free Throws Made
FTA	Free Throws Attempted
FT%	Free Throws Percentage -> $(FTM / FTA) * 100$
OREB	Offensive Rebounds
DREB	Defensive Rebounds
REB	Rebounds
AST	Assists
TOV	Turnovers
STL	Steals
BLK	Blocks
SR	Shots rejected
PF	Personal Fouls
PFD	Personal Fouls Drawn
PIR	Performance Index Rating -> $((PTS + REB + AST + STL + BLK + PFD) - ((FGA - FGM) + (FTA - FTM) + TO + PF))$
EFF	Efficiency -> $((PTS + REB + AST + STL + BLK) - ((FGA - FGM) + (FTA - FTM) + TO))$
+/-	Plus Minus